



TRENZ
ROTORUA
13–16 MAY
2019

ACTIVITY AFTERNOON CATALOGUE

2019

Event of:



Premier sponsor:



Supported by:



Managed by:



info@trenz.co.nz
www.trenz.co.nz

ACTIVITY AFTERNOON CATALOGUE

Contents

Tour 1 - Rotorua Canopy Tours Original Canopy Tour.....	4
Tour 2 - Rotorua Canopy Tours Ultimate Canopy Tour.....	5
Tour 3 - Rotorua Duck and Redwoods Treewalk	6
Tour 4 - Where the centre of the earth meets the sky	7
Tour 5 - 3D Trick Art Gallery	8
Tour 6 - Rotorua Heritage Farm Tour	9
Tour 7 - Hobbiton Movie Set Tour	10
Tour 8 - Whitewater Rafting with Kaitiaki Adventures.....	11
Tour 9 - Mt Tarawera hike and steam box hangi	12
Tour 10 - Katoa Mokoia Island experience	13
Tour 12 - Redwoods mountain bike tour.....	14
Tour 13 - Private guide, sailing and floatplane flight - REQUEST ONLY	15
Tour 14 - Agrodome and Rainbow Springs	16
Tour 15 - Beauty by night - by day	17
Tour 16 - Te Puia behind the scenes	18
Tour 17 - Volcanic Hills wine tasting and National Kiwi Hatchery	19
Tour 18 - Off Road New Zealand - Ultimatum Package	20
Tour 19 - Adventure icons - OGO Rotorua and Velocity Valley	21
Tour 20 - Essential oils, massage and mineral bathing	22
Tour 21 - Mineral bathing, high tea, and tea rituals.....	23
Tour 22 - Kaituna river rafting with River Rats	24
Tour 23 - Tamaki Māori Village future products and vision	25
Tour 24 - Kaituna river rafting with Kaituna Cascades	26
Tour 25 - Guided tour of Paradise Valley Springs.....	27
Tour 26 - Waikite Valley natural geothermal bathing	28
Tour 27 - Guided geothermal wonderland tour	29

Event of:



Premier sponsor:



Supported by:



Managed by:



info@trenz.co.nz
 www.trenz.co.nz



Tour 28 - Pink and White Terraces and geothermal tour	30
Tour 29 - Waimarino glow worm cave and hotpools kayak tour	31
Tour 30 - Helicopter White Island / Mount Tarawera dual volcanic landing – REQUEST ONLY	32
Tour 31 - Forest to village: Treewalk and Whakarewarewa	33
Tour 32 - A Duck and Whaka ultimate Rotorua experience	34
Tour 33 – Village and kai – the living Māori village	35

Tour 1 - Rotorua Canopy Tours

Original Canopy Tour

Rotorua Canopy Tours' Original Canopy Tour is an unforgettable and enlightening adventure. Journey deep into ancient New Zealand forest in small groups of up to 10 people, led by knowledgeable Kiwi guides who will treat you to fascinating commentary about the history, ecology and birdlife of this area.

The Original Canopy Tour is Rotorua Canopy Tours' award-winning flagship experience that has become a must-do activity for visitors in New Zealand. Halfway through the tour you will find yourself standing on a 1000 year old Rimu tree, before soaring across the valley on an exhilarating 220m zipline.



Unlike most other forests, this location has never been logged and has stood untouched for 1000 years. Due to the success of the pest eradication programme, North Island robins now often visit you throughout the tour and eat mealworms right out of your hand! Flourishing before your eyes, the forest is alive with bird song.

Our guides are highly trained to keep you safe, make you smile, teach you amazing things and create memories that will last a lifetime.

The last stop on our epic adventure is Eat Street, where we meet up with fellow Rotorua operators and other famil participants before heading back to your accommodation.

Provider Details

Rotorua Canopy Tours
www.canopytours.co.nz

Additional Information

Wear closed toe footwear, warm socks and have at least two layers of clothing.

Participants must be able to walk three flights of stairs unassisted.

Participants must be under 120kg.

Event of:



Premier sponsor:



Supported by:



Managed by:



info@trenz.co.nz
www.trenz.co.nz

Tour 2 - Rotorua Canopy Tours

Ultimate Canopy Tour

The Ultimate Canopy Tour is a higher value and more immersive experience than the company's flagship experience.

It is a 3.5 hour adventure deep into ancient forest that was designed to position Rotorua Canopy Tours as leaders in high value nature based adventure tourism. The Ultimate Canopy Tour takes eco-tourism to a whole new level with mind-blowing features including a cliff top walkway, spiral and suspended staircases and a controlled descent from a towering tree down to the forest floor below. The longest zipline is 400m and will have you soaring across a fern-filled valley.



You are escorted through the Ultimate Canopy Tour by knowledgeable Kiwi guides and treated to fascinating commentary about the history, ecology and birdlife of this area. Unlike most other forests, this location has never been logged and has stood untouched for 1000 years. Due to the success of the pest eradication programme, it means North Island robins now often visit you throughout the tour and eat mealworms right out of your hand! Flourishing before your eyes, the forest is alive with bird song.

Our guides are highly trained to keep you safe, make you smile, teach you amazing things and create memories that will last a lifetime. The last stop on our epic adventure is Eat Street, where we meet up with fellow Rotorua operators and other family participants before heading back to your accommodation.

Provider Details

Rotorua Canopy Tours
www.canopytours.co.nz

Additional Information

Wear closed toe footwear, warm socks and have at least two layers of clothing.

Participants must be able to walk three flights of stairs unassisted.

Participants must be under 120kg.

Event of:



Premier sponsor:



Supported by:



Managed by:



info@trenz.co.nz
www.trenz.co.nz

Tour 3 – Rotorua Duck and Redwoods Treewalk

You'll be picked up by New Zealand's only genuine WW2 landing craft aka 'the duck'. On the tour you'll splashdown onto two lakes, Lake Okareka and Lake Tarawera, but don't worry we'll provide blankets and mulled wine to keep you warm! You'll see some of the best natural landscapes New Zealand has to offer. You'll also hear stories delivered by our legendary conDUCKtors.

The Duck will then drop you at the Redwoods Treewalk. Walk over suspended swing bridges among 110-year-old Redwood giants and marvel at the pristine beauty of the Redwoods (Whakarewarewa) forest from special viewing platforms up to 12 metres in the air! These two remarkable activities combined; from the beautiful surroundings to the stories of old, you are sure to leave the tour with a great insight into the region.



Provider Details

Rotorua Duck Tours
www.rotoruaducktours.co.nz

Redwoods Treewalk
www.treewalk.co.nz

Additional Information

Bring warm clothes and comfortable walking footwear.

Participants must have the ability to walk up one flight of stairs and be comfortable walking across platforms.

Event of:



Premier sponsor:



Supported by:



Managed by:



info@trenz.co.nz
www.trenz.co.nz

Tour 4 – Where the centre of the earth meets the sky

Walk through the steaming lands of Ngati Rangiteaorere that have excited people for centuries, and dine on food prepared by myths and legends.

Bathe in the mud as Maori warriors have done for over 800 years, and unwind with live music and canapés with an indigenous twist.

Experience all the geothermal activity, history, culture and cuisine that Rotorua has to offer, in one place.

Arrive at Hell's Gate inquisitive, leave rejuvenated.



Provider Details

Hell's Gate
www.hellsgate.co.nz

Additional Information

Please bring comfortable walking shoes, jacket, swimwear (or use ours for free). Towels provided.

Please note hot pools may be unsuitable for those who are pregnant, have high blood pressure, a sulphur allergy, heart condition or had a recent heart operation, please check with your medical professional.

Participants must have the ability to walk 2.5km (approx. 1 hour)

Event of:



Premier sponsor:



Supported by:



Managed by:



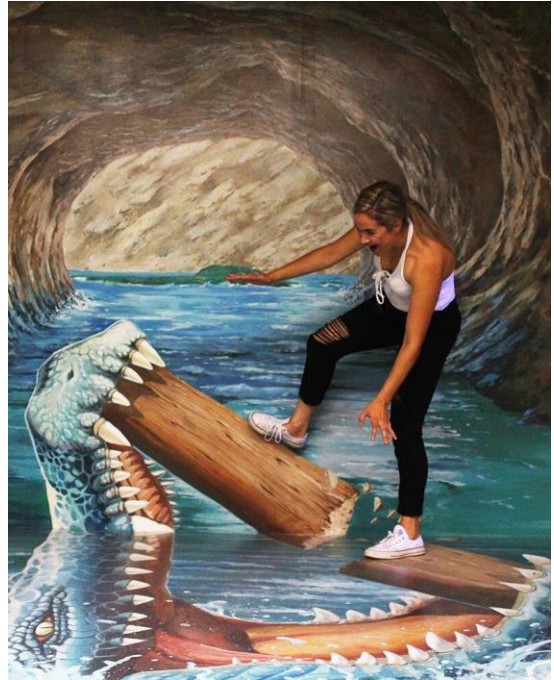
info@trenz.co.nz
www.trenz.co.nz

Tour 5 – 3D Trick Art Gallery

3D Trick Art is a 3-dimensional experience of 50 paintings that all ages can enjoy, and is the only gallery of its kind in New Zealand. We showcase two dimensional painting that change to 3D paintings through your camera. It is an educational, creative and imaginative experience - one painting can change many times depending on the individual's perception.

This is the only gallery where people can test their acting skills, imagination and creativity and have fun creating their own version of 50 3D master paintings.

The 3D Trick Art Gallery has been rated as sixth out of 68 must see attractions in Rotorua by Trip Advisor.



Provider Details

Rotorua Heritage Farm
www.3dtrickart.co.nz

Event of:



Premier sponsor:



Supported by:



Managed by:



info@trenz.co.nz
www.trenz.co.nz

Tour 6 – Rotorua Heritage Farm Tour

The Farm Tour is a true traditional New Zealand one hour professionally guided tour on a covered trailer.

The Farm Tour starts with stunning views of a natural Heritage Farm environment such as a crystal-clear natural spring fed water creek with lots of native plants and various types of wildlife and a botanical flower garden with farm artefacts.

The Farm Tour consists of meeting nursery animals, travelling through our farm environment while getting up close and interacting with farm animals with the guide providing educational information about the farm and its livestock such as alpacas, llamas, goats, many different breeds of sheep and cattle, ponies, deer, ostrich, pigs, chickens, rabbits and more.

The experience concludes with a world-class dog show under the instruction of an experienced dog handler and an exciting sheep shearing show.



Provider Details

Rotorua Heritage Farm
www.thefarmtour.co.nz

Event of:



Premier sponsor:



Supported by:



Managed by:



info@trenz.co.nz
www.trenz.co.nz

Tour 7 – Hobbiton Movie Set Tour

Join us and experience the real Middle-earth™ at the Hobbiton™ Movie Set, where, in the heart of the Waikato region, you can step into the lush pastures of the Shire™, as seen in The Lord of the Rings and The Hobbit trilogies.

Fall in love with the Alexander family sheep farm, just as acclaimed director Sir Peter Jackson did, as you journey through the unequivocal beauty of the land, with the mighty Kaimai Ranges towering in the distance. Your guide will then escort you around the set, showing the intricate detailing, pointing out the most famous locations and explaining how the movie magic was made.

You will be fully guided around the 12 acre set; past Hobbit Holes™, the Mill and into the world-famous Green Dragon™ Inn, where you will be presented with a complimentary, exclusive Hobbit™ Southfarthing™ beverage to conclude your own Middle-earth™ adventure.

Buses return between 5.30 and 6pm.



Provider Details

Hobbiton Movie Set
www.hobbitontours.com

Additional Information

Bring sensible footwear and warm clothing.

Event of:



Premier sponsor:



Supported by:



Managed by:



info@trenz.co.nz
www.trenz.co.nz



TRENZ
 ROTORUA
 13-16 MAY
 2019

Tour 8 - Whitewater Rafting with Kaitiaki Adventures

Help prepare traditional Maori Hangi alongside the Ngati Pikio people manawhenua (caretakers) of the of the Kaituna Awa (river).

Head off to experience our manaakitanga (hospitality) rafting the Okere section of the Kaituna River with our world class highly qualified guides. Snake through steep bush clad canyons and over 14 awesome rapids, 3 waterfalls including the world's highest commercially rafted waterfall the Tutea Falls.

Blended with touches of Māori culture, this trip offers it all for both white water rafting enthusiasts and first timers. On your return from the Awa (river) Kaituna, you will enjoy the Hangi prepped and awaiting your return to the Taheke Marae.



Provider Details

Kaitiaki Adventures Aoteroa
www.kaitiaki.co.nz

Additional Information

Swimsuit and towel required. Bring warm clothing to change into.

Wetsuits and lifejackets provided.

Event of:



Premier sponsor:



Supported by:



Managed by:



info@trenz.co.nz
www.trenz.co.nz

Tour 9 – Mt Tarawera hike and steam box hangi

Mt Tarawera volcanic crater hike and Te Puia steam boxed hangi combo.

This unique experience combines the majesty of Mt Tarawera with the raw geothermal power and cultural experience that is Te Puia.

Be transported from your accommodation up to Mt Tarawera, where guides will enthrall you with the unique history of the sacred mountain, the stories of the people that lived upon its slopes, all as you taken in the breath-taking views of the stunning surrounding lakes area.

The part of your journey through to Te Puia will build on the unique relationship between Mt Tarawera and the people of Ngati Tuhourangi, who were deeply affected by the eruption of 1886, which destroyed their homes and forced their relocation to the thermal valley of Te Whakarewarewa.

This experience includes a personalised guided tour of Te Puia, a customised-to-the-guest steam box lunch, and transportation to and from your accommodation.



Provider Details

Kaitiaki Adventures Aotearoa
www.kaitiaki.co.nz

Te Puia
tepuia.com

Additional Information

Please wear warming clothing and comfortable hiking shoes.

Event of:



Premier sponsor:



Supported by:



Managed by:



info@trenz.co.nz
www.trenz.co.nz



TRENZ
 ROTORUA
 13-16 MAY
 2019

Tour 10 - Katoa Mokoia Island experience

Start your exclusive journey to the sacred Mokoia Island either by jet boat or water taxi. Katoa Lake Rotorua is the only company permitted to land on the sacred Mokoia Island.

On arrival you will experience an authentic welcome (Powhiri) from descendants of the Te Arawa tribe, followed by a cultural performance.

Your guide, who is also a descendant will take you on a guided tour where they will share their Maori heritage through beautiful myths and legends handed down through generations of our whakapapa. During our walk you will visit Hinemoa's Pool (Wai-Kimihia), while being immersed in the famous love story between Hinemoa and Tutanekai, you will also come across abundant birdlife.

Mokoia is a rhyolite lava dome rising 180 metres from the lake surface.

After being immersed in the culture and history of our tribe, you will travel on to the beautiful "Peppers on the Point" luxury lodge, where you will enjoy a leisurely high tea and refreshments.



Provider Details

Katoa Lake Rotorua
www.katoalakerotorua.co.nz

Mitai Maori Village
mitai.co.nz

Peppers on the Point
www.peppersonthepoint.co.nz

Additional Information

Bring good walking shoes and a jacket.

Moderate level of fitness required.

Event of:



Premier sponsor:



Supported by:



Managed by:



info@trenz.co.nz
www.trenz.co.nz



TRENTZ
 ROTORUA
 13-16 MAY
 2019

Tour 12 - Redwoods mountain bike tour

Join our team for an amazing afternoon of exploring the Whakarewarewa, Redwood Forest by bike. Our professional and friendly guides will show you why this is the most popular bike park in the Southern Hemisphere.



Provider Details

Multi Day Adventures
www.mdanz.com

Additional Information

Bring comfortable clothing to cycle off-road in.

Good level of fitness required.

Event of:



Premier sponsor:



Supported by:



Managed by:



info@trenz.co.nz
www.trenz.co.nz

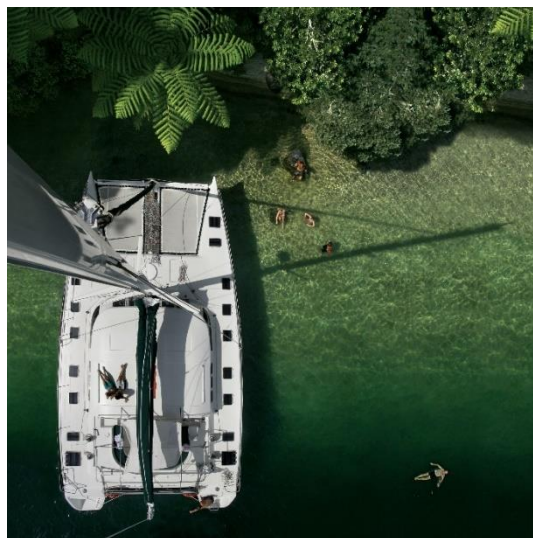


TRENTZ
ROTORUA
13-16 MAY
2019

Tour 13 - Private guide, sailing and floatplane flight - REQUEST ONLY

With a myriad of top quality activities and attractions in Rotorua, our lakes are often overlooked. Lake Rotoiti was the first in the region to be discovered and is one of the biggest. Your private guides will introduce to the lake as we take a wonderful private sailing charter on a 53ft catamaran.

We'll enjoy nibbles and drinks as we explore Rotoiti as well as take the opportunity to soak in geothermally heated hot pools right on the lake edge. If weather permits the Volcanic Air floatplane will meet you at the yacht for a scenic flight experience before returning to the jetty for the return transfer.



Provider Details

MDA Experiences
www.mdanz.com

Volcanic Air
www.volcanicair.co.nz

Additional Information

This Activity Afternoon option has limited places. You can request to participate within the booking form, but **please also select a bookable tour**. You will be informed by email if you have a place on Tour 13.

Event of:



Premier sponsor:



Supported by:



Managed by:



info@trenz.co.nz
www.trenz.co.nz



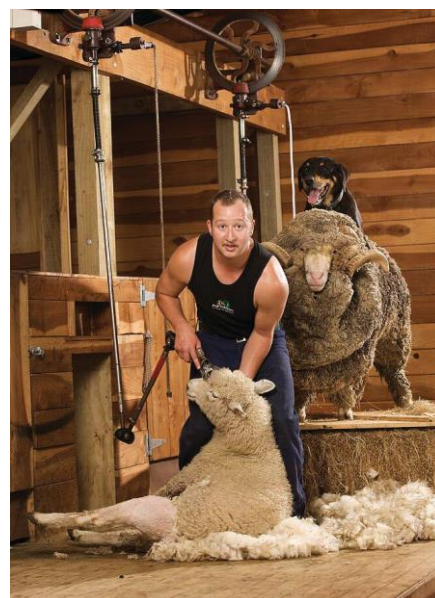
TRENZ
 ROTORUA
 13-16 MAY
 2019

Tour 14 – Agrodome and Rainbow Springs

The World Famous Agrodome and Rainbow Springs Nature Park

First stop: Agrodome. The Agrodome is located in the heart of a real 350-acre working farm. Join us for a short guided tour of the farm, animals and our orchard. Along the way, there are fascinating things to learn - and a few laughs too! Then witness a live sheep shearing demonstration and dog mustering at the lovely Bowen House. You will get to hand-feed cute little baby animals have the chance to taste natural kiwifruit juice and delicious sweet honey. We will also introduce you to a new sheep breed – known as the cutest sheep in the world.

We will then transport you to Rainbow Springs Nature Park. Rainbow Springs is proud to be home of the Kiwi Burrow and the National Kiwi Hatchery Aotearoa, the world's largest kiwi hatchery! This fun, new interactive experience teaches you all about New Zealand's national icon and the recovery efforts undertaken by many to ensure the kiwi remains for future generations.



Provider Details

Agrodome
agrodome.co.nz

Rainbow Springs
rainbowsprings.co.nz

Event of:



Premier sponsor:



Supported by:



Managed by:



info@trenz.co.nz
www.trenz.co.nz



TRENTZ
 ROTORUA
 13-16 MAY
 2019

Tour 15 - Beauty by night - by day

First stop: Mitai Maori Village. Be captivated by the displays of weaponry and combat, coupled with the grace and beauty of the poi dance. You'll be amazed by the spine tingling haka finale. The Mitai family is proud to have created a sacred and spiritual place that offers you an indigenous cultural experience like no other. Marvel at the crystal clear water full of eels and trout, flowing directly from the earth at the sacred Fairy Spring.

We will then escort you next door, to Rainbow Springs Nature Park. Our passionate and experienced guides will take you on a journey of New Zealand's wildlife story. Kiwi, kaka, kea, tuatara - you'll see it all. Rainbow Springs is proud to be home of the Kiwi Burrow and the National Kiwi Hatchery Aotearoa, the world's largest kiwi hatchery! This fun, new interactive experience teaches you all about New Zealand's national icon and the recovery efforts undertaken by many to ensure the kiwi remains for future generations.



Provider Details

Mitai
mitai.co.nz

Rainbow Springs
www.rainbowsprings.co.nz

Event of:



Premier sponsor:



Supported by:



Managed by:



info@trenz.co.nz
www.trenz.co.nz

Tour 16 – Te Puia behind the scenes

An exclusive, behind the scenes, VIP tour of an iconic New Zealand experience

Te Whakarewarewa geothermal valley, the new nocturnal kiwi enclosure and the new wananga (schools) showcasing whale bone and greenstone carving, bronze casting, wood carving, weaving and ta moko (tattooing).

The hidden gems, indigenous cuisine, expert knowledge and access to special locations will be an absolute highlight of this afternoon activity.

See Te Puia as you never have before!



Provider Details

Te Puia
www.tepuia.com

Additional Information

Bring good walking shoes and a jacket.

Walking level of fitness required.

Event of:



Premier sponsor:



Supported by:



Managed by:



info@trenz.co.nz
www.trenz.co.nz



TRENZ
 ROTORUA
 13-16 MAY
 2019

Tour 17 - Volcanic Hills wine tasting and National Kiwi Hatchery

First stop: Rainbow Springs Nature Park. Rainbow Springs is proud to be home of the Kiwi Burrow and the National Kiwi Hatchery Aotearoa, the world's largest kiwi hatchery!

This fun, new interactive experience teaches you all about New Zealand's national icon and the recovery efforts undertaken by many to ensure the kiwi remains for future generations.

Then jump on board one of Skyline's eight-seater Gondola cabins and experience spectacular views of Lake Rotorua, the city and steaming geothermal vistas. The 900 metre long Doppelmayr cableway system will transport you on a gentle, scenic ride up to the Skyline Rotorua complex.

Once up top, you will sample carefully crafted Volcanic Hills wines from New Zealand's most recognised and respected wine regions, all while enjoying panoramic views over Lake Rotorua.



Provider Details

Skyline
www.skyline.co.nz

Rainbow Springs
www.rainbowsprings.co.nz

Additional Information

Wine tasting is restricted to 18+. Please bring your ID.

Event of:



Premier sponsor:



Supported by:



Managed by:



info@trenz.co.nz
www.trenz.co.nz



Tour 18 – Off Road New Zealand - Ultimatum Package

Bush, bash and race - the ultimatum package

Driven by Adventure! Begin with an easy 20-minute journey from Rotorua through the Mamaku Ranges, view the amazing volcanic Tors (hills) that this area is well known for!

Arrive off the beaten track at our reception, which is set amongst a stunning backdrop of New Zealand forest wilderness. Be ready to be blown away the cobwebs with a fun and action packed couple of hours!

Our adventure activities include Raceline Karting – 1.2 kilometres of kart racing excitement and the only product of its type in New Zealand. Monster 4X4 Thrill Ride – hang on tight while being driven through our twisting and turning native forest trails in a purpose built Monster Truck. 4WD Bush Safari - our premier 4WD experience that puts the driver in control like never before with challenges and obstacles along the way. Every activity is fully guided by our highly trained and entertaining guides.



Provider Details

Off Road NZ
www.offroadnz.co.nz

Additional Information

Bring covered in shoes and a current drivers licence to be sighted on arrival.

This whole experience is perfect for all abilities.

Event of:



Premier sponsor:



Supported by:



Managed by:



info@trenz.co.nz
www.trenz.co.nz



TRENZ
ROTORUA
13-16 MAY
2019

Tour 19 - Adventure icons - OGO Rotorua and Velocity Valley

Prepare for an afternoon of exhilarating and hilarious fun at these two iconic Rotorua adventures.

First stop is OGO Rotorua. You get to take a sneak peek into the OGO factory (where all the magic happens and the giant balls are handmade). Chat with the Kiwi inventors of downhill-ball-rolling, before getting to try this bucket list adventure first hand (we use warm water and have hot tubs so don't worry about the cold).

Then you'll head to Velocity Valley the home of more world first inventions. Compete on the Shweeb Racer (the only one in the world) or take it up a notch with the Swoop, Agrojet, Freefall Xtreme or challenge yourself on the Rotorua Bungy!

The last stop on our epic adventure is Eat Street, where we meet up with fellow Rotorua operators and other famil participants before heading back to your accommodation.



Provider Details

OGO Rotorua
www.ogo.co.nz

Velocity Valley
www.velocityvalley.co.nz

Additional Information

Sensible shoes, warm clothing, swimsuit and towel.

Maximum weight per person is 125kg (275lb) to participate in OGO.

Event of:



Premier sponsor:



Supported by:



Managed by:



info@trenz.co.nz
www.trenz.co.nz



TRENZ
 ROTORUA
 13-16 MAY
 2019

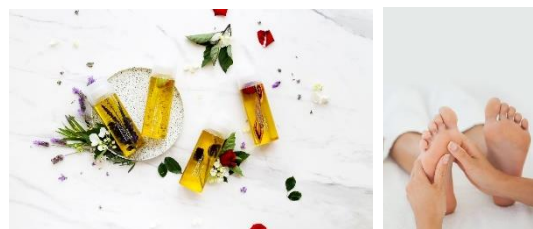
Tour 20 - Essential oils, massage and mineral bathing

Essential oils, wellness, massage & mineral bathing experience

Undertake an essential oils making master class with one of New Zealand's premier skin care and essential oils brand, Linden Leaves, hosted by founder and director Brigit Blair and Polynesian Spa.

After enjoying a hot soak in the world famous mineral waters at Polynesian Spa, enjoy a foot and leg massage with one of our skilled massage therapists from the Retreat Day Spa.

Essentials Oils master class with Linden Leaves will take place in 88Ra Cafe where you will be served canapés and refreshments.



Provider Details

Polynesian Spa
www.polynesianspa.co.nz

Additional Information

Bring bathing suits, water bottles, jandals (flip flops).

Towels, haircare and hairdryers will be provided.

We advise anyone with an underlying medical or health condition to consult their doctor should they have any queries regarding the use of hot pools.

Event of:



Premier sponsor:



Supported by:



Managed by:



info@trenz.co.nz
www.trenz.co.nz



TRENZ
 ROTORUA
 13-16 MAY
 2019

Tour 21 – Mineral bathing, high tea, and tea rituals

After enjoying a hot soak in the world famous mineral waters at Polynesian Spa, enjoy a high tea like no other.

Food and refreshments will be provided during a hosted high tea experience with one of New Zealand's premier tea production and supply companies 'T Leaf t'.

Alongside our range of New Zealand t's, we will also have in house 'Tea Wizard' Kenny Jiang host a Chinese tea rituals and sampling experience.



Provider Details

Polynesian Spa
www.polynesianspa.co.nz

Additional Information

Bring bathing suits, water bottles, jandals (flip flops).

Towels, haircare and hairdryers will be provided.

We advise anyone with an underlying medical or health condition to consult their doctor should they have any queries regarding the use of hot pools.

Event of:



Premier sponsor:



Supported by:



Managed by:



info@trenz.co.nz
www.trenz.co.nz



TRENTZ
 ROTORUA
 13-16 MAY
 2019

Tour 22 - Kaituna river rafting with River Rats

Situated in the Okere Falls Scenic Reserve the Grade 5 Kaituna River features the world's highest commercially rafted waterfall, the awesome 7m (23ft) Tutea Falls.

Although this trip provides full on action, the river is "pool drop" meaning that every rapid is followed by calm water making it very forgiving for a grade 5 river. In fact, around 70% of our customers have never rafted before.

Adventurous beginners welcome.



Provider Details

River Rats
www.riverrats.co.nz

Additional Information

Swimsuit and towel required. Wetsuits and lifejackets provided.

Event of:



Premier sponsor:



Supported by:



Managed by:



info@trenz.co.nz
www.trenz.co.nz



TRENZ
 ROTORUA
 13-16 MAY
 2019

Tour 23 – Tamaki Māori Village future products and vision

Intimate, interactive and entertaining afternoon with Tamaki Māori Village

Get an exclusive first glance at the new product offerings and future vision of Tamaki Māori Village. Our Kaumatua (elder) will illustrate the concept of 'Te Pou Toru' (our three pillars), the essence of who we are.

Be enlightened by riveting stories of our people, land and spirituality. Replenish your mind, body and soul as you take part in a spiritual Rongoa (Māori healing) experience. Marvel at the expertise of a qualified Māori medical herbalist. They will discuss the medicinal uses of our rich Native Fauna, its history and traditional uses. Touch, smell and taste Māori herbs and discover how Rongoa is used to heal the body with natural anaesthetics, tonics and blood purifiers.

Enjoy nourishing Māori kai (food) paired with fresh herbal teas and tonics. Revel in peace and relaxation amongst the stunning, natural environment. At the end of your experience, take home a special parcel filled with herbal treats and delicacies. You will leave our village rejuvenated and invigorated.



Provider Details

Tamaki Maori Village
www.tamakimaorivillage.co.nz

Additional Information

Dress warmly as part of the experience is outdoors. Wear comfortable shoes.

Event of:



Premier sponsor:



Supported by:



Managed by:



info@trenz.co.nz
www.trenz.co.nz



TRENZ
 ROTORUA
 13-16 MAY
 2019

Tour 24 – Kaituna river rafting with Kaituna Cascades

Grade 5 Kaituna River Rafting with Kaituna Cascades

Join the Original Kaituna Rafting Company for an unbeatable grade 5 white-water experience on one of New Zealand's most exciting and beautiful rivers! Experience the thrills and spills of the Mighty Kaituna River as we take on the world famous 7 metre Tutea Falls, the highest commercially rafted waterfall.

Together with your expert guide, your team will enjoy a 50 minute action packed ride down 14 epic rapids in a tight and twisting warm water jungle canyon. This is a white water enthusiasts dream and is a must do for adrenaline junkies and first time rafters alike! No prior experience is necessary as you will be given full and comprehensive training.

All you need is a reasonable level of fitness, a sense of fun and adventure, swimwear and a towel. Our base is located in an awesome sunny location on the banks of the Kaituna River and there are no long bus rides or waiting around in wet suits!

Come join us and our awesome crew!



Provider Details

Kaituna Cascades
www.kaitunacascades.co.nz

Additional Information

Bring swimwear and a towel.

Some level of fitness required. No experience necessary.

Event of:



Premier sponsor:



Supported by:



Managed by:



info@trenz.co.nz
www.trenz.co.nz



TRENZ
 ROTORUA
 13-16 MAY
 2019

Tour 25 - Guided tour of Paradise Valley Springs

Paradise Valley Springs is a beautifully presented New Zealand wildlife park.

Animals found wild around the country such as deer, goats, tahr and wallabies as well as a range of sociable farm animals like alpacas, donkey, emus and sheep can all be handfed.

Visit the Kea, New Zealand's alpine parrot in their walk-through aviary. Spot native waterfowl on our wetlands.

View rainbow and brown trout and spot our large native eels lazing in their ponds.



Provider Details

Connect NZ Tourism
www.connectnztourism.com

Paradise Valley Springs
www.paradisev.co.nz

Xquizit Limousines and Tours
www.xquizit.co.nz

Additional Information

Outdoor attraction, dress accordingly.

Event of:



Premier sponsor:



Supported by:



Managed by:



info@trenz.co.nz
www.trenz.co.nz

Tour 26 – Waikite Valley natural geothermal bathing

Bathing in 100% pure natural geothermal waters in a tranquil rural environment

Waikite Valley Thermal Pools, Springs 'n' Spa is a unique place to experience bathing in 100% pure natural geothermal waters.

The boiling, sulphur free, calcite laden waters, direct from the depths of the earth, cascade into our outdoor Settler's Pool, Pergola Pool and Garden Pools, Sit 'n' Soak Pool and Tubs, and provide bathing options for all ages.



A temperature range of between 35 and 40 degrees is offered. All pools are drained and refilled daily. Changing facilities, including showers and family change room are offered.

An eco-trail, which snakes its way alongside a boiling river leading to the spectacular Te Manaroa Spring, is also available and provides a face to face encounter with raw natural geothermal activity at its best. A must see!

Transport is supplied by Xquizit Limousines and Tours, a first class provider of exquisitely presented transportation.

Provider Details

Connect NZ Tourism
www.connectnztourism.com

Waikite Valley Thermal Pools, Springs 'n' Spa
www.hotpools.co.nz

Xquizit Limousines and Tours
www.xquizit.co.nz

Additional Information

Bathing suits required, complimentary towel hire provided.

An activity for all ages/abilities to enjoy.

Event of:



Premier sponsor:



Supported by:



Managed by:



info@trenz.co.nz
www.trenz.co.nz

Tour 27 – Guided geothermal wonderland tour

Experience the spectacular geothermal activity and stunning volcanic landscapes of the Rotorua region on a guided walking tour of Waiotapu Thermal Wonderland and the Waimangu Volcanic Valley.



Provider Details

Nature Connections Rotorua
www.natureconnections.co.nz

Additional Information

Bring good quality walking shoes or boots, a rainproof parka or jacket, and wear appropriate clothing for the activity.

Reasonable level of fitness required.

Event of:



Premier sponsor:



Supported by:



Managed by:



info@trenz.co.nz
www.trenz.co.nz



TRENZ
 ROTORUA
 13-16 MAY
 2019

Tour 28 - Pink and White Terraces and geothermal tour

Pink and White Terraces discovery and geothermal exploration

Explore the lost eighth Natural Wonder of the World, the Pink and White Terraces, via boat cruise on Lake Rotomahana, and the geothermal wonders created as a result of volcanic eruption on foot, in this unique part of the world.

Immerse yourself in the stories of the Mt Tarawera volcanic eruption, its people, and the resulting dramatic landscape changes that created the world's youngest geothermal valley. We connect people with the beating heart of the world's youngest geothermal valley, its unique history and legacy. We share how the world began.

Use the brand new Waimangu App to unlock the hidden treasures with augmented reality, navigation, and storytelling.

Commentary and guiding will be provided for all parts of this adventure. This is the birthplace of tourism in New Zealand and the stories and features are mesmerising.



Provider Details

Waimangu Volcanic
www.waimangu.co.nz

Additional Information

Reasonable level of fitness required.

Event of:



Premier sponsor:



Supported by:



Managed by:



info@trenz.co.nz
www.trenz.co.nz



TRENZ
 ROTORUA
 13-16 MAY
 2019

Tour 29 - Waimarino glow worm cave and hotpools kayak tour

You will enjoy a half-hour drive through the edges of the largest pine plantation in the Southern Hemisphere, past a geothermal ecological zone within local Maori Iwi lands.

You will then arrive at the edge of Lake Rotoiti on the Manupirua lands before embarking on an afternoon of exploring the glow worm cave and enjoying the geothermal attributes of the Manupirua hot pools.

While at the hot pools, you will enjoy a range of local New Zealand wine and beer (ID required), as well as refreshment platters which include cheese, crackers, and a range of hot food.

This will give you a taste of our normal day time kayak tour, as well as our new starlight kayak experience and using the new big kanu feature.



Provider Details

Waimarino
www.waimarinogroup.com

Additional Information

Bring warm clothing, swimwear and a towel.

Moderate level of fitness required for kayaking.

No experience required.

Event of:



Premier sponsor:



Supported by:



Managed by:



info@trenz.co.nz
www.trenz.co.nz

Tour 30 - Helicopter White Island / Mount Tarawera dual volcanic landing – REQUEST ONLY

Experience the thrill of combining our two signature helicopter tours landing on and exploring two of New Zealand's most iconic volcanos - Mount Tarawera and White Island. The contrast between the two couldn't be more amazing - from the sights, sounds and smells of the active crater floor at White Island to the heights of Mount Tarawera's majestic summit.

Once at the site of the largest eruption in New Zealand's living memory, summit views include cavernous craters and a spectacular surrounding landscape of pristine lakes, massive forests and acclaimed national parks.

Duration: Allow 3.5 hours.



Provider Details

Volcanic Air
www.volcanicair.co.nz

Additional Information

Bring good walking shoes and Jacket.

Must be able to walk on uneven ground.

This Activity Afternoon option has limited places. You can request to participate within the booking form, but **please also select a bookable tour**. You will be informed by email if you have a place on Tour 30.

Event of:

TINZT TOURISM
INDUSTRY
NEW ZEALAND
TRUST

Premier sponsor:

AIR NEW ZEALAND 

Supported by:

 **100% PURE
NEW ZEALAND**
newzealand.com

Managed by:

TIA TOURISM
INDUSTRY
ROTORUA

info@trenz.co.nz
www.trenz.co.nz

Tour 31 - Forest to village: Treewalk and Whakarewarewa

From forest to village: Redwoods Treewalk and Whakarewarewa – The Living Māori Village

Enjoy a fun and fascinating meander through two of Rotorua's iconic and award winning experiences.

At Redwoods Treewalk stroll high among the 118-year-old Coastal Redwood trees along a 700 metre suspended walkway, which features 28 suspension bridges and 27 living decks, elevated from 6 metres to 20 metres at its highest point. This is the best place to feel the spirit of the forest and gain a unique bird's eye perspective, capturing the Redwoods picturesque beauty and ambiance. Enjoy a guided walk with a Treewalk Ranger, with no extensive training or safety harness required. Appreciate the spirit of this special forest before your next stop – Whakarewarewa – The Living Maori Village.

Whakarewarewa, home to the Tūhourangi Ngāti Wāhiao people, is one of New Zealand's oldest, iconic and most authentic destinations. At the village you'll enjoy a guided tour with a local and learn about Māori culture as well as life in a geothermal village. Be mesmerised by the locals' backyard: there is bubbling mud, steaming mineral pools and erupting geysers - including Pōhutu Geyser, New Zealand's largest geyser.

From there, sit back and be enchanted by the sweet sound of Māori cultural performance – and then we will relax over a tasty hangi pie and beer/wine (ID required).



Provider Details

Redwoods Treewalk
www.treewalk.co.nz

Whakarewarewa - The Living Māori Village
whakarewarewa.com

Additional Information

Bring sturdy walking shoes, wet weather gear.

Reasonable level of fitness required.

Event of:



Premier sponsor:



Supported by:



Managed by:



info@trenz.co.nz
www.trenz.co.nz



TRENTZ
ROTORUA
13-16 MAY
2019

Tour 32 - A Duck and Whaka ultimate Rotorua experience

You'll be picked up by New Zealand's only genuine WW2 landing craft aka 'the duck'. We'll wrap you up in a cozy blanket to warm you on the outside - and a tippie of mulled wine will deliver warm fuzzies on the inside!

On the tour we'll splashdown onto Lake Tikitapu and Lake Okareka. You'll see volcanic domes and stunning lakes, and hear stories of Māori legends and our explosive volcanic history - all delivered by our legendary and amusing conDUCKtors. The mulled wine (ID required) will help with finding us even funnier. We'll drop you at Whakarewarewa where you'll see these stories come to life!

Home to the Tūhourangi Ngāti Wāhiao people, Whakarewarewa is one of New Zealand's most authentic destinations. At the village you'll enjoy a guided tour with a local and learn about Māori culture as well as life in a geothermal village. Be mesmerised at the locals' backyard: there is bubbling mud, steaming mineral pools and erupting geysers - including Pōhutu Geyser, New Zealand's largest geyser.



From there, sit back and be enchanted by the sweet sound of Māori cultural performance - and then we will relax over a tasty hangi pie and beer/wine (ID required).

Provider Details

Rotorua Duck Tours
rotoruaducktours.co.nz

Whakarewarewa - The Living Māori Village
whakarewarewa.com

Additional Information

Bring sturdy walking shoes, wet weather gear.

Reasonable level of fitness required.

Event of:



Premier sponsor:



Supported by:



Managed by:



info@trenz.co.nz
www.trenz.co.nz

Tour 33 – Village and kai – the living Māori village

Whakarewarewa - The Living Māori Village: village and kai experience

As one of New Zealand's oldest, iconic and most authentic geothermal and cultural experiences, Whakarewarewa – The Living Māori Village is an, award winning, day-time destination.

Home to the Tūhourangi-Ngāti Wāhiao people, our residents have been welcoming and sharing their enviable way of life with visitors for over 100 years. Find out why we are a New Zealand Must Do!



To make the most of your visit to our friendly village, you'll enjoy a relaxed guided tour with a local and discover an enviable way of life where locals utilise the earth's forces for warmth, bathing and cooking. You'll get peeks into modern Māori Village life and learn the fascinating origins of our village, including how it adapted after a volcanic eruption. After the tour, we'll take a quick stroll so you can enjoy some more of the geothermal sights in our backyard: there's bubbling mud, hot pools galore and sprouting geysers.

We'll enjoy the sweet sound of our in-house Māori concert performance, which includes the world-famous haka. Then it's time to relax over a delicious hangi pie and a beer/wine (ID required).

Experience an authentic encounter at Whakarewarewa and experience culture that is rich in traditions, set in a landscape where your senses will come alive.

Provider Details

Whakarewarewa - The Living Māori Village
whakarewarewa.com

Additional Information

Bring sturdy walking shoes, wet weather gear.

Reasonable level of fitness required.

Event of:



Premier sponsor:



Supported by:



Managed by:



info@trenz.co.nz
www.trenz.co.nz